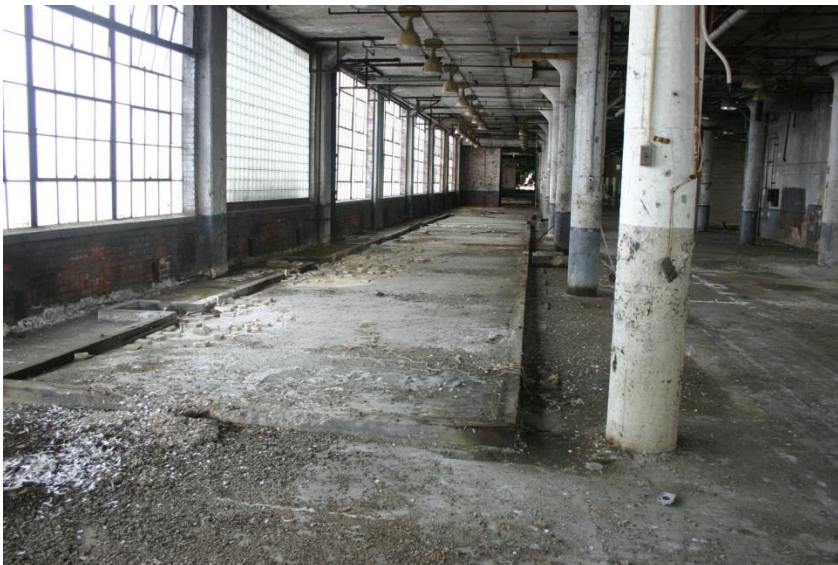


American Standard – Renovation and Parking Garage Conversion



Project Architect – Joseph & Joseph, Louisville, KY

The American Standard Building originally designed by Joseph & Joseph Architects in the mid 1920's is one of Louisville's landmark manufacturing facilities. It is a four story reinforced concrete flat slab structure with a total floor area over 250,000 sq ft. The existing structure was converted to a parking facility in 2008-2009. Situated near University of Louisville, the parking structure now serves new housing near the campus.



American Standard interior prior to renovation

American Standard
Interior ramp and
topping slab added

