

Field Elementary – Mechanical Vault Reconstruction

Owner-Jefferson County Public Schools

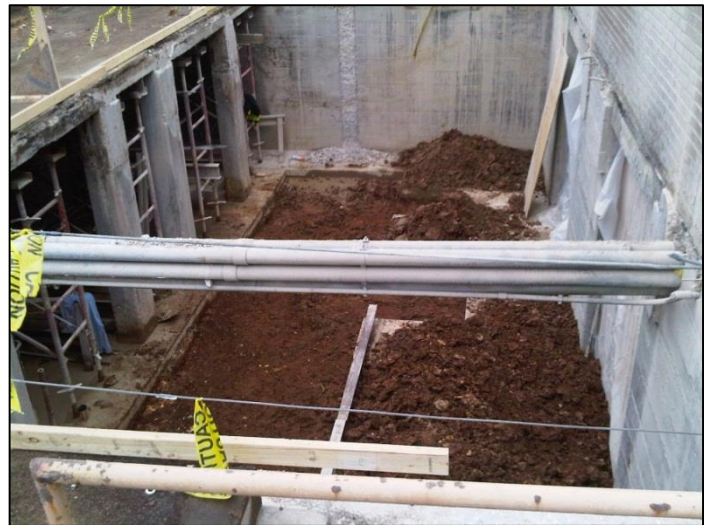
Project Contact – John Lee, JCPS

Field Elementary built in the late 1800's was original constructed with a large underground concrete vault to store coal for the boiler. Severe concrete deterioration was evident which was a concern since the vault roof structure supported daily bus traffic. A new concrete retaining wall was built to infill a portion of the vault with stone to support the driving surface. The remainder of the vault was rebuilt to allow access to the mechanical room. A removable concrete panel was added to the structural slab to ensure that the existing mechanical units could be removed in the future.



Deterioration of concrete slab and reinforcing due to age and heavy use of deicing salts on the drive surface above.

Portion of top slab removed to construct the new mechanical room access.



Reconstructed vault with new above ground access.